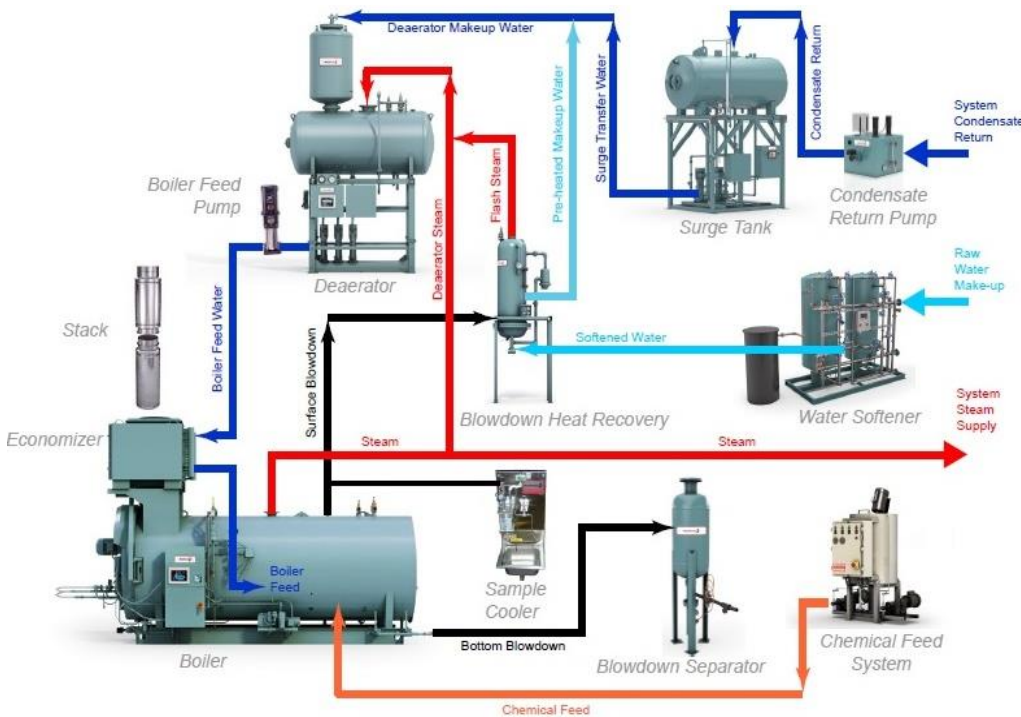


## GRAMICID-22

### All Volatile filming polyamine formulation for Boiler feed water



**GRAMICID – 22** is a combination of Polyamine film forming compound, Neutralizing Amine, Alkalinizing Amine, Complexing agent, Oxygen Scavenger & Dispersing Agent. It forms strong barriers of Aliphatic Fatty Amine on ferrous & non-ferrous amine

**CHEMICAL DOSING:**  
Dosed in boiler feed water continuously 15-20 ppm/ M3 of Fresh makeup water  
**There may be some variation in procedure depending on system condition.**

### **APPLICATION AND BENEFITS OF GRAMICID-22:**

#### **1. POLYAMINE FILM FORMING COMPOUND:**

- Stable from PH range 5 to 11
- Protect to system under abnormal condition like ingress of acid, Hardness slippage, High Oxygen slippage from De-aerator.
- Physical barrier to prevent the contact of metal surface with O<sub>2</sub>, CO<sub>2</sub>, Corrosion products & scale forming ions, thus inhibits deposition as well as corrosion for boiler water system
- Non sticky Amine film barrier on wet surface of turbine blade helps in prevention of glassy Silica deposits on turbine blades.
- Protects the system against low pH as well as Carbonic acid attack.

#### **2. COMPLEXING AGENT & DISPERSING AGENT:**

- Inhibit the scale formation in system.
- It minimizes the Silica fouling

- #### **3. GRAMICID-22 IS AN ALL VOLATILE COMPOUND**
- & permits to operate the boiler water on high COC. It helps to reduce the quantity of blow down of drum water & save energy. High thermal conductivity of Amine film & clean surface of heat transfer area of boiler saves energy.

### **SPECIFICATION:**

Appearance	Slight Brownish Clear Liquid
pH (as is)	< 11.5
Solubility	Mixable in any proportion with water.
Stability	Stable under normal condition

### **PACKING:**

**GRAMICID-22 is available in 30Kg and 50Kg HDPE carboys.**